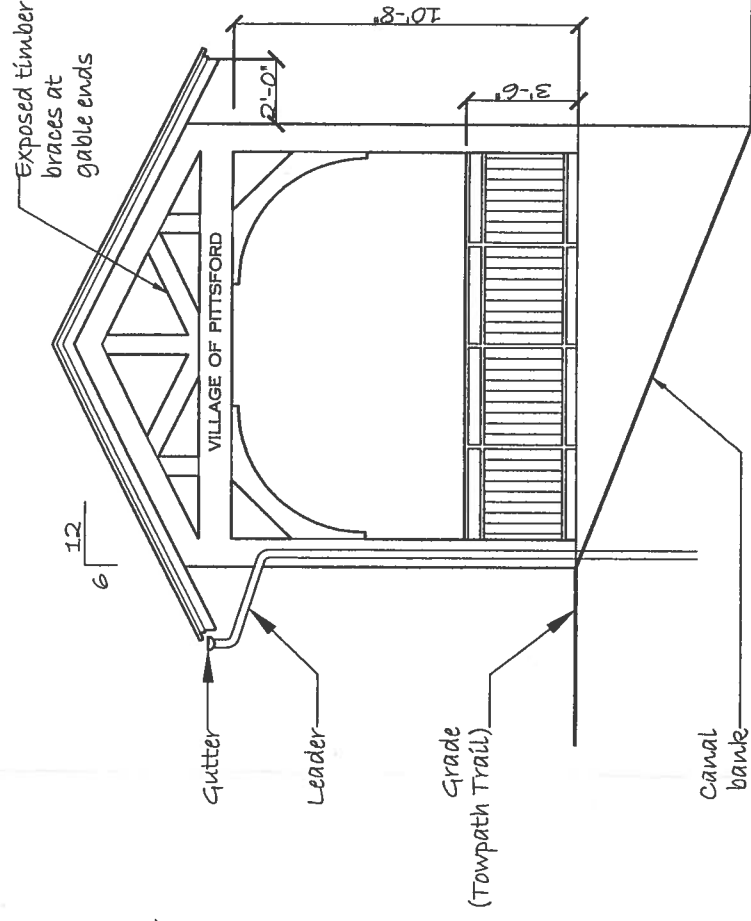
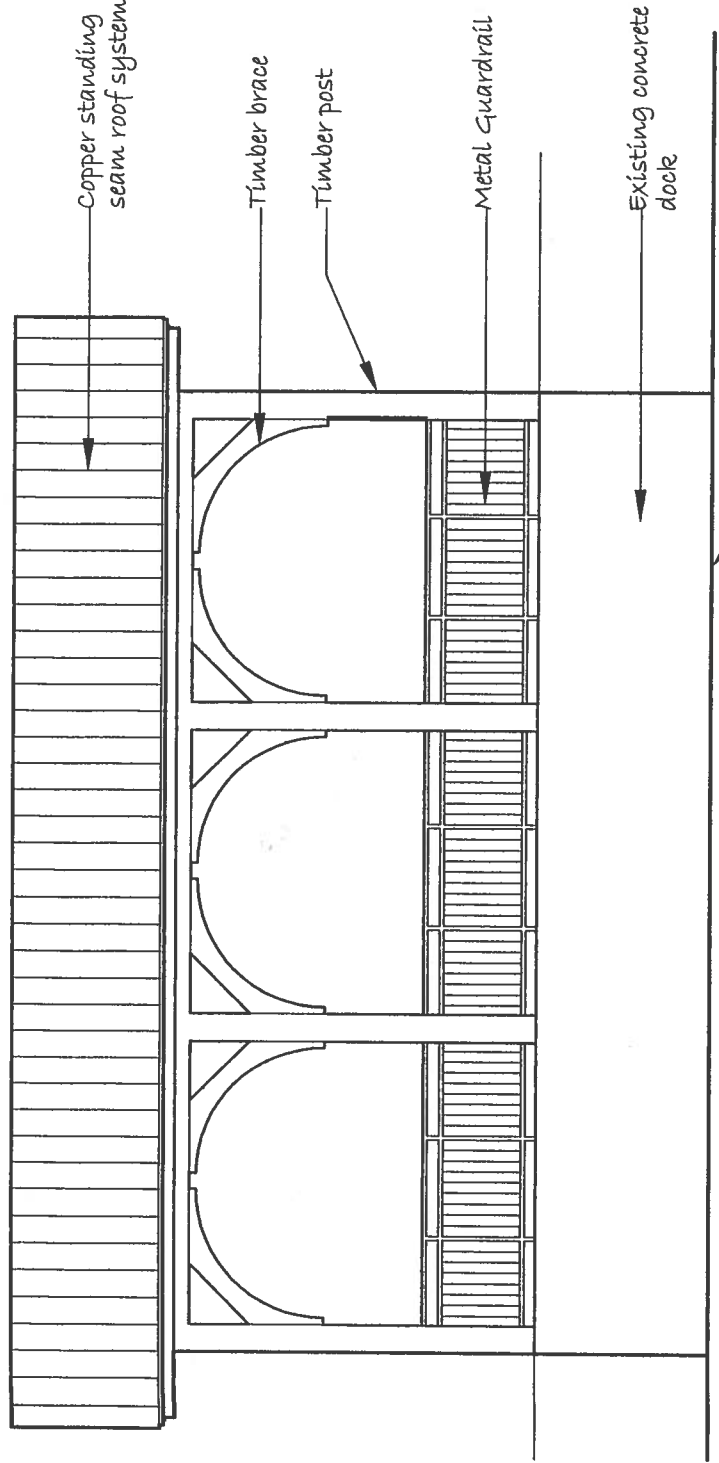


VILLAGE OF PITTSFORD
 ERIE CANAL PARK
 PROPOSED WATERFRONT
 PAVILION
 DECEMBER 2007

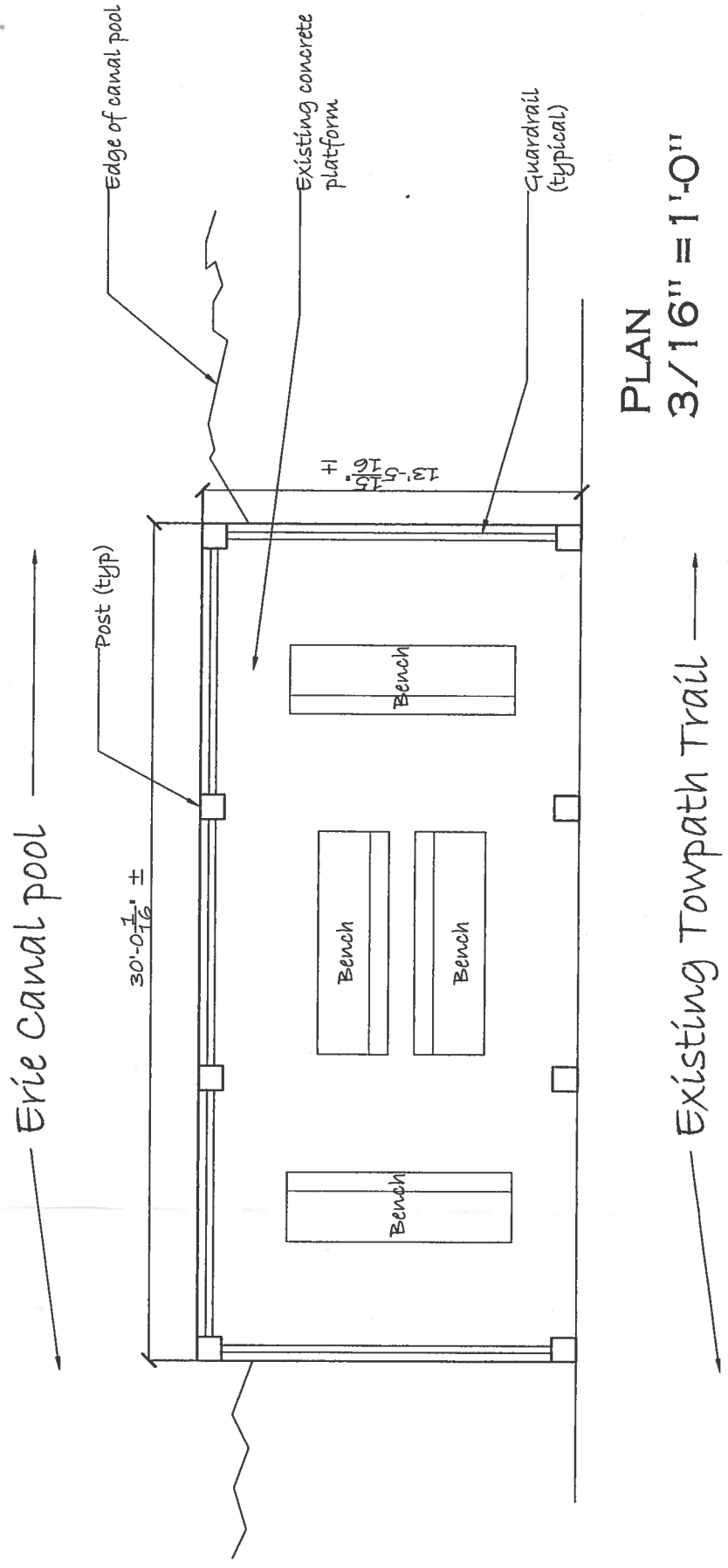


WEST ELEVATION
 (END ELEVATION)
 3/16" = 1'-0"

NORTH ELEVATION
 (CANAL ELEVATION)
 3/16" = 1'-0"



NORTH ELEVATION
 (TOWPATH ELEVATION)
 3/16" = 1'-0"



PLAN
 3/16" = 1'-0"